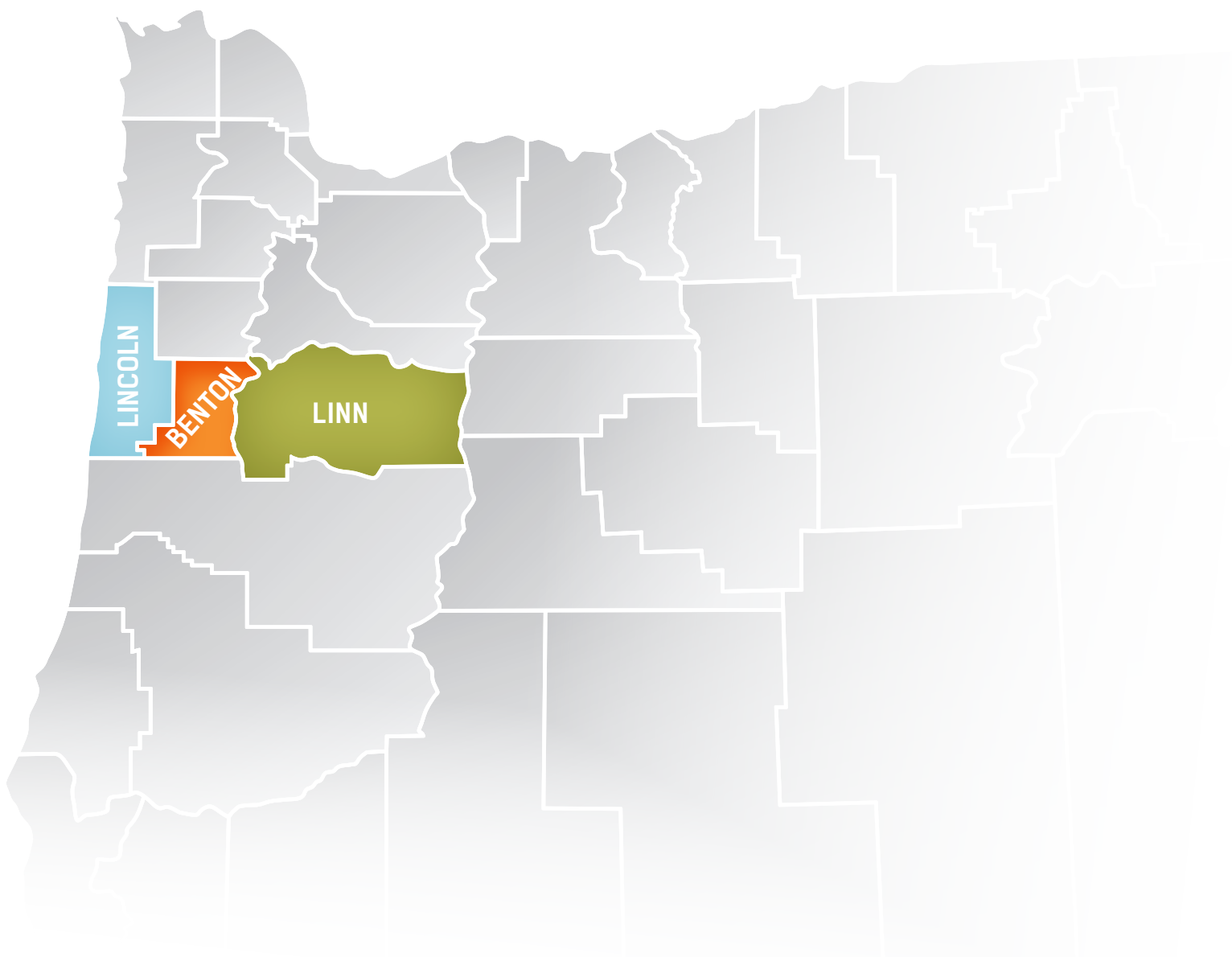


## IHN-CCO Transformation

# Summary of Current Pilots

Winter 2019

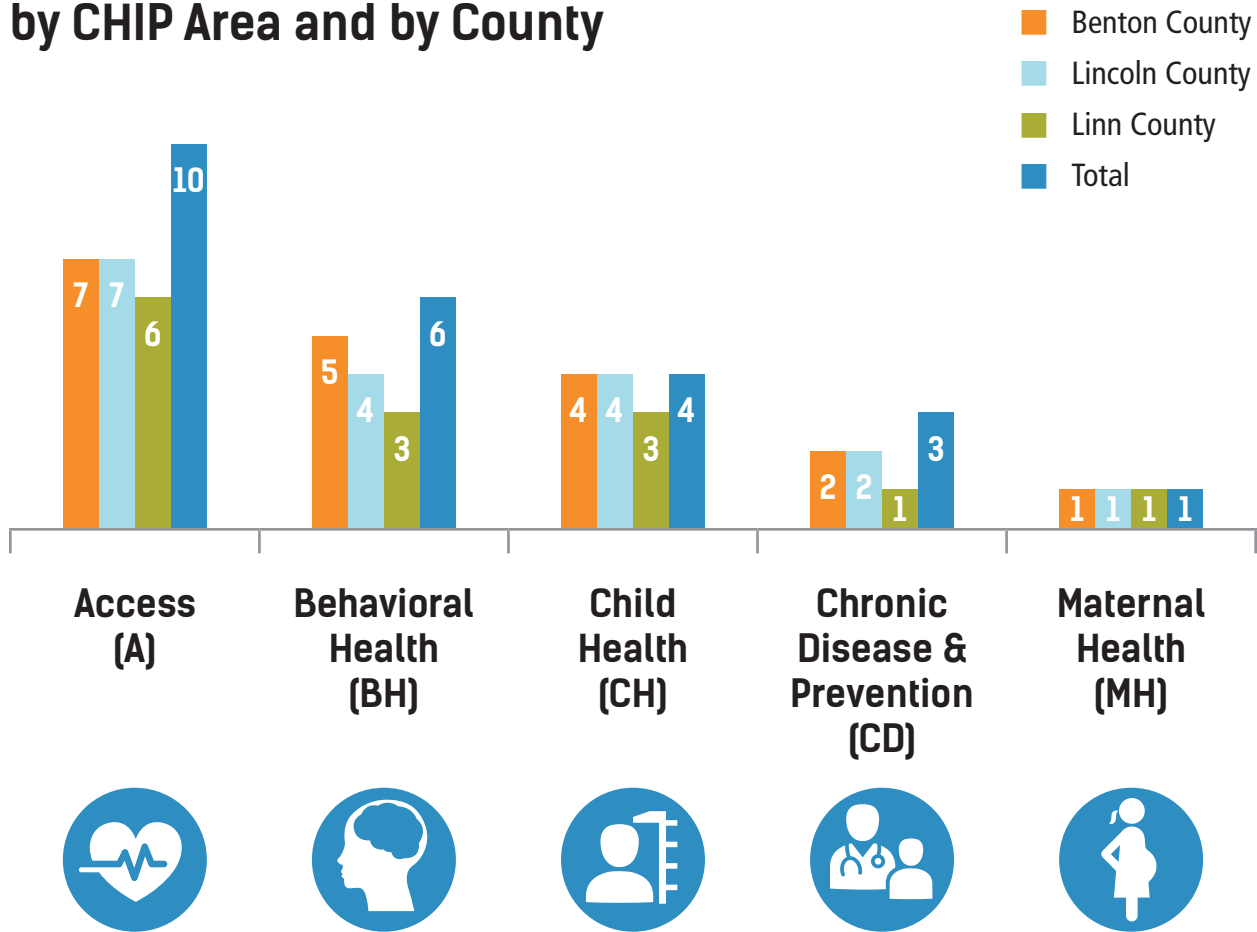


These are the active InterCommunity Health Network Coordinated Care Organization (IHN-CCO) Transformation pilots in Benton, Lincoln, and Linn counties.

Pilots are selected from a competitive Request for Proposals process. The goal is to achieve better quality healthcare, lower costs, and more access to services. To be considered, pilots must meet at least one Community Health Improvement (CHIP) area.

For more information, please visit [IHNtogether.org](http://IHNtogether.org).

## Transformation Pilots by CHIP Area and by County



The CHIP areas addressed by each pilot are shown by the icons. The small numbers below the icons reflect the Outcomes and Indicators Concepts outlined in the CHIP Addendum – January 2016.

## Community Doula

**Date range:** January 2018 – December 2019

**Location:** Benton, Lincoln, and Linn counties

**Site:** Heart of the Valley Birth and Beyond

Birth doulas are Traditional Health Workers that build trusting relationships with pregnant women and provide physical, emotional, and informational support during labor and birth. The goals of the pilot are to increase the number of birth doulas, improve health outcomes, and evaluate medical cost savings for pregnant members of IHN-CCO.

### Health Outcomes:

- Increase number of women trained as birth doulas
- Improve birth outcomes such as prematurity, cesarean-section and pain medication use



**Sustainability:** If successful, Heart of the Valley Birth and Beyond will bill for services and seek out funding for the training portions of the pilot.

## Community Roots

**Date range:** January 2019 – December 2019

**Location:** Lincoln County

**Site:** Olalla Center for Children and Families

Community Roots provides mental health care with compassion-focused therapy for families in crisis. The model includes nature connectivity, parental training and education, and bringing families back together (reunification).

### Health Outcomes:

- Reduce stress and anxiety
- Prevent child abuse and neglect
- Improve access to mental health services



**Sustainability:** If successful, Olalla Center for Children and Families will continue providing services.

## Health Equity Summits and Trainings

**Date range:** January 2018 – September 2019

**Location:** Benton, Lincoln, and Linn counties

**Sites:** Willamette Neighborhood Housing Services and the Health Equity Workgroup

This pilot works to put on health equity summits and trainings across Benton, Lincoln, and Linn Counties. These trainings identify and develop strategies and approaches that best meet local needs. The goal is to make sure that the health equity lens is used in the delivery of healthcare and social services.

### Health Outcomes:

- Create a plan to address health equity issues faced by IHN-CCO members
- Increase collaboration among local organizations
- Improve provider understanding of health equity



A2

**Sustainability:** If successful, Health Equity Summits and Trainings will continue the trainings with fees to cover costs.

## Helping High School Students to Understand Pain, Opioid Addiction, and Healthy Self-Care

**Date range:** January 2019 – December 2019

**Location:** Benton County

**Sites:** Corvallis School District

This pilot's main goal is to create curriculum to teach high school students how to understand pain and take care of themselves better. The pilot also provides access to wellness classes and works on emergency department diversion.

### Health Outcomes:

- Decreased emergency department use
- Improved access to wellness classes
- Reduced access to opioids (pain medicine)



A

BH

CH

**Sustainability:** If successful, the Corvallis School District will continue providing services and expanding the curriculum.

## Homeless Resource Team

**Date range:** January 2019 – December 2019

**Location:** Benton County

**Sites:** Samaritan Health Services

The Homeless Resource Team includes a case manager, Health Navigator, and Homeless and Vulnerable Patient Committee to help homeless patients find supportive housing. The pilot partners with local health departments, housing agencies, and community service organizations.

### Health Outcomes:

- Improved primary care use
- Decreased emergency department use



**Sustainability:** If successful, the partnerships will continue, and funding will occur through medical billing and reduced costs.

## Integrated Foster Child Wellbeing

**Date range:** January 2019 – December 2019

**Location:** Benton, Lincoln, and Linn counties

**Champion:** Dr. Carissa Cousins

The purpose of this pilot is to develop a model of care to find the best way to coordinate care for high-need foster children. Key activities are coordination of services, intensive care coordination, creating partnerships, and establishing a sustainable model.

### Health Outcomes:

- Provide timely medical, dental, and mental health care for all foster children
- Support foster youth and families during transition periods



**Sustainability:** If successful, the partnerships will continue, and funding will occur through medical billing and reduced costs.

## Peer Wellness Specialist Training

**Date range:** January 2018 – December 2019

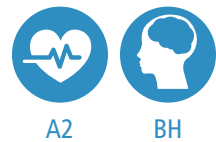
**Location:** Benton County (impacting Benton, Lincoln, and Linn counties)

**Sites:** Family Tree Relief Nursery and Traditional Health Worker Workgroup

This pilot will have certified training courses for Peer Wellness Specialists (PWSs) in the tri-county area. PWSs are Peer Support Specialists (peers trained in addiction and recovery) with additional training. They work to help people become healthier.

### Health Outcomes:

- Identify members in need of Peer Wellness Services
- Increase the number of PWSs working in the region



**Sustainability:** If successful, the training will continue to be offered by the Traditional Health Worker Hub at an affordable cost.

## Planned and Crisis Respite Care

**Date range:** January 2019 – December 2019

**Location:** Benton, Lincoln, and Linn counties

**Site:** Morrison Child and Family Services

This pilot provides temporary care (respite care) for children in the foster care system that have special mental and/or behavioral health needs. This pilot will fill an identified gap in the delivery system.

### Health Outcomes:

- Increase the number of certified foster homes
- Increase usage of respite services and reduce barriers



**Sustainability:** If successful, Morrison Child and Family Services will continue to provide services and outreach to IHN-CCO members.

## Reduce and Improve

**Date range:** January 2019 – December 2019

**Location:** Linn County

**Sites:** Capitol Dental Care, Albany General Hospital and Samaritan Cancer Resource Center

This pilot works to improve the relationship between physical and oral health. A dental hygienist provides oral health services in a hospital and clinic. These services include navigation for patients and resources for the medical staff.

### Health Outcomes:

- Improved quality of care for hospital patients
- Improved access for emergency department patients with dental conditions



A

**Sustainability:** If successful, Capitol Dental Care will explore medical and dental billing to offset project costs.

## Regional Health Education Hub

**Date range:** January 2018 – September 2019

**Location:** Benton, Lincoln, and Linn counties

**Site:** Samaritan Health Services Health Education

This pilot transforms the delivery of health education in the tri-county region by establishing a central health education hub. This allows community members, social service agencies, and healthcare professionals to easily access the full range of health education offered.

### Health Outcomes:

- Improve member chronic disease self-management skills
- Reduce overall healthcare utilization
- Decrease Emergency Department visits



A



CD

**Sustainability:** If successful, the partnerships will continue and funding will occur through cost-sharing and insurance contracts.

## Veggie Rx in Lincoln County

**Date range:** January 2018 – June 2019

**Location:** Lincoln County

**Site:** Lincoln County Health & Human Services and Lincoln County School Based Health Centers

Lincoln County Public Health and the Lincoln County School Based Health Centers will work with local food agencies and programs to provide resources to those with food security needs. Families with food security needs will be referred to Food Share of Lincoln County.

### Health Outcomes:

- Improve the food security screening rate
- High graduation rate from nutrition education courses
- Increased enrollment in Food Share for members with food security needs



**Sustainability:** If successful, the Lincoln County Health & Human Services will continue to provide food security services.