



IHN-CCO Transformation
**Summary of Current Pilots
for Linn County**

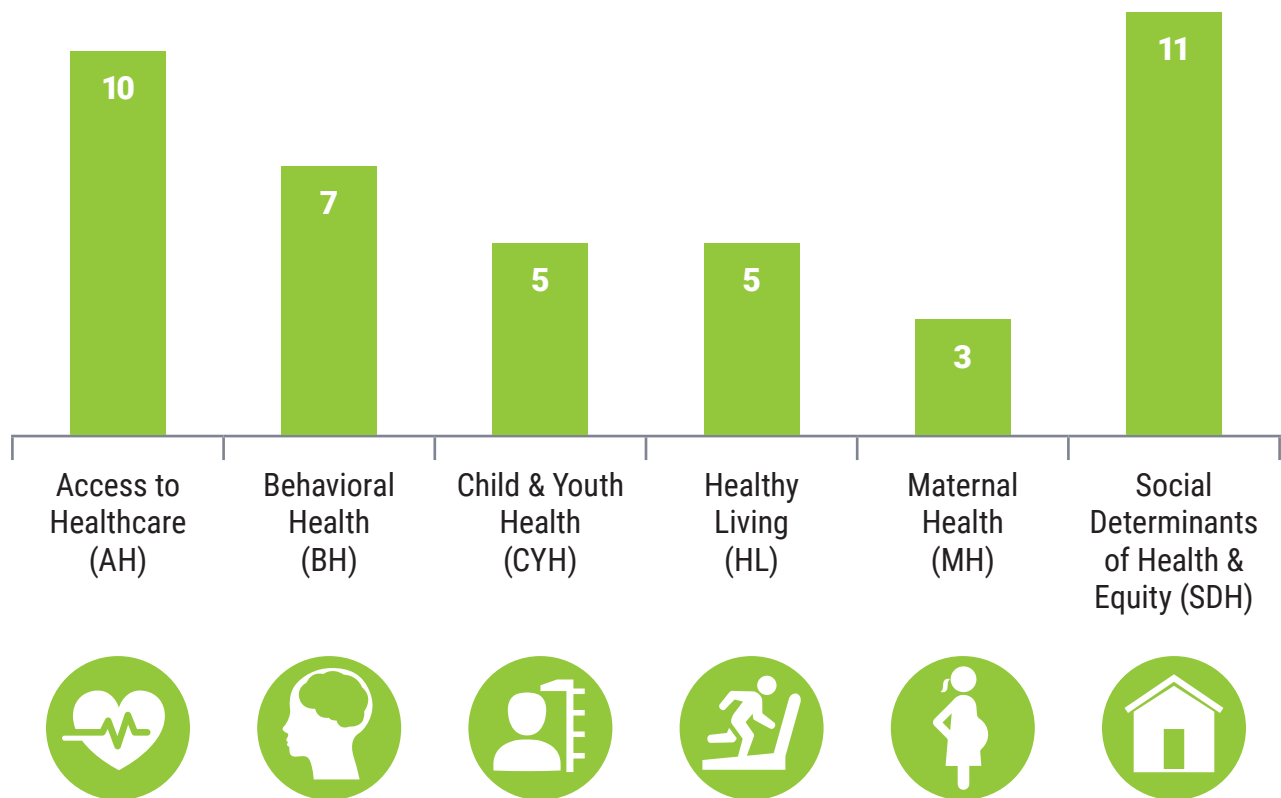
Winter 2021

Be Healthy. Be Happy.

These are the current InterCommunity Health Network Coordinated Care Organization (IHN-CCO) Transformation pilots in Linn County. Pilots are selected from a competitive Request for Proposals process. The goal is to achieve better quality healthcare, lower costs and more access to services.

To be considered, pilots must meet at least one Community Health Improvement (CHIP) area. The new pilots in 2021 must address at least one CHIP Outcome and Indicator Concept in the area of Access, Behavioral Health or Social Determinants of Health and Equity. The graph below shows the CHIP areas addressed by each pilot and the icons are carried through the document to represent CHIP areas for each pilot summary.

Transformation Pilots by CHIP Area and by County



CommCard Program

Date range: January 2021 to December 2021

Location: Benton, Lincoln and Linn counties

Site: The Arc of Benton County



The CommCard Program pilot is a communication and accommodation program for people with developmental disabilities (DD) and the healthcare professionals who serve them. The pilot will be brought to Benton, Lincoln and Linn County middle and high schools to enhance self-advocacy skills among students who experience any degree of communication impairment. The CommCard Program involves a customizable card with important communication accommodation information as well as training for both the cardholders and healthcare professionals who will be viewing their patients' cards.

Health Outcomes:

- Addresses health inequities among people with DD.
- Increased access to healthcare professionals for young people with disabilities.
- Improved satisfaction for healthcare professionals.

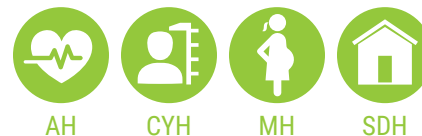
Sustainability: If successful, The Arc of Benton County will continue to support the CommCard Program in all three counties.

Community Doula Program

Date range: January 2021 to December 2021

Location: Benton, Lincoln and Linn counties

Site: Heart of the Valley Birth and Beyond



Birth doulas are Traditional Health Workers that build trusting relationships with pregnant members and provide physical, emotional and informational support during labor and birth. The main goal of the pilot is to expand the original Community Doula pilot into Lebanon, Newport and Lincoln City hospitals.

Health Outcomes:

- Increase number of Spanish speaking doulas in the community, especially to the East Linn and coastal communities.
- Improve birth outcomes such as prematurity, cesarean-section and pain medication use.
- Cross train active multi-lingual doulas to serve as health care interpreters.

Sustainability: If successful, Heart of the Valley Birth and Beyond will continue spreading services into new communities.

Disability Equity Center

Date range: January 2021 to December 2021

Location: Benton, Lincoln and Linn counties

Site: Disability Equity Center



AH



BH



HL



SDH

The primary goal of the Disability Equity Center pilot is to create an inclusive cultural and resource center that meets the diverse needs of people living with disabilities across the Willamette Valley, as well as their family and friends. The pilot will address the specific needs of healthcare providers, addressing gaps and augmenting partnerships across formal disability support services as well as educating healthcare workers and support providers about client-driven disability healthcare best practices. We will also teach our local community about ableism and change social misperceptions about people with disabilities.

Health outcomes:

- Increase opportunities for disabled people to be as healthy as possible, in particular through decreased social isolation and increased agential interdependence.
- Increase number of disabled people who receive care communicated in a way that ensures that they can understand and be understood by their care providers, and that they are effectively engaged in their care.
- Reduce stigma and increase community awareness that disabilities are part of everyday life and widely experienced.

Sustainability: If successful, DEC will work with IHN-CCO to contract for services and also partner around increased opportunities for collaborative, non-traditional healthcare delivery models.

ENLACES

Date range: January 2021 to December 2021

Location: Linn County

Site: Casa Latinos Unidos



AH



BH



CYH



MH



SDH

The overall objective of the ENLACES pilot project is to enhance the capacity of Casa Latinos Unidos to serve in a culturally sensitive way the most vulnerable members of the Latino community of Linn County and to bridge linguistic and cultural gaps that may exist between this community and the system of services. Through two promotoras(es), the pilot will increase awareness of free and low-cost health care (and other) services available to members of the household.

Health outcomes:

- Increased access to services.
- Improved referral pathways.
- Strengthened the capacity of the system of services in culturally appropriate ways.

Sustainability: If successful, Casa Latinos Unidos will work with IHN-CCO to contract for services.

Healthy Homes Together

Date range: January 2021 to December 2021

Location: Linn County

Site: Albany Partnership for Housing and Community Development and Family Tree Relief Nursery



AH



BH



SDH

Healthy Homes Together (HHT) brings community partners together to spread Traditional Health Worker services to new housing communities in Linn County. The pilot's purpose is to improve healthcare access, to positively impact behavioral health, and to improve the social determinants of health for the community and IHN members. HHT will be coordinating with other community partners to provide a support network and educational opportunities for THWs who are embedded in the housing community.

Health outcomes:

- Maintain stable and safe housing.
- Improve access to healthcare.
- Positively impact behavioral health.

Sustainability: If successful, Albany Partnership for Housing and Community Development and Family Tree Relief Nursery will work with IHN-CCO to contract for services.

Hub City Village

Date range: January 2020 to December 2021

Location: Linn County

Site: Creating Housing Coalition



Creating Housing Coalition is partnering with several agencies to develop the first tiny home community in Linn County. This is a new and different housing model which meets a need unmet by single family houses and apartments. It also addresses access to resources through onsite health navigation.

Health Outcomes:

- Closed loop referral process based on health needs and income complete.
- Circle of providers established.

Sustainability: If successful, Creating Housing Coalition will work with IHN-CCO to contract for services and expand to other areas.

Integrated Foster Child Wellbeing

Date range: January 2019 to December 2021

Location: Benton, Lincoln and Linn counties

Champion: Dr. Carissa Cousins,
Samaritan Health Services



The purpose of this pilot is to develop a model of care to find the best way to coordinate care for high-need foster children. Key activities are coordination of services, intensive care coordination, creating partnerships and establishing a sustainable model.

Health Outcomes:

- Provide timely medical, dental, and mental health care for all foster children.
- Support foster youth and families during transition periods.

Sustainability: If successful, the partnerships will continue, and funding will occur through medical billing and reduced costs.

Linn County Crisis Outreach Response

Date range: January 2021 to December 2021

Location: Linn County

Site: Family Assistance and Resource Center Group



AH



BH



SDH

Family Assistance and Resource Center Group's mission is to establish trust and inspire hope by providing access to resources, services, and education to those who are experiencing homelessness and housing instability in Linn County. This pilot will strengthen collaboration and access between related social service agencies, Samaritan Health Services, and Linn County Public Health to provide access to the homeless patients and unstably housed.

Health outcomes:

- Increased access to health services.
- Improved access to housing.
- Improve health equity through innovative crisis intervention and advocacy for the homeless and home at risk.

Sustainability: If successful, Family Assistance and Resource Center Group will continue the project through private and corporate donors, internal fundraising activities, enhanced partnerships and grant opportunities.

Mental Health Home Clinic

Date range: January 2021 to December 2021

Location: Linn County

Site: Samaritan Health Services, Linn County Mental Health,
C.H.A.N.C.E.



The Mental Health Home Clinic pilot purpose is to bring together community partners in a place for patients who need more of a focus on their mental health/behavioral health, and crisis needs while still getting their medical needs met. The pilot brings multi-agencies and interdisciplinary teams in one location, providing all around comprehensive treatment and better care to members through a team-based approach.

Health outcomes:

- Reduced Emergency Department visits for mental health concerns.
- Decreased HgA1c levels.
- Decreased post-traumatic stress disorder, depression and anxiety symptoms scores.
- Improved access through a high number of kept appointments.

Sustainability: If successful, the partnership between Samaritan Health Services, Linn County Mental Health and C.H.A.N.C.E. will continue and support the Mental Health Home Clinic.

Partnership for Oral Health

Date range: January 2021 to December 2021

Location: Linn County

Site: Capitol Dental Care



AH



CYH



HL



MH



SDH

The Partnership for Oral Health project is designed to improve access to oral health services and provide greater support to members with dental anxiety and mental health issues. The pilot will work with traditional health workers to increase oral health awareness and resources. An Expanded Practice Dental Hygienist (EPDH) will be available as a resource for better understanding of dental issues. The EPDH will coordinate and provide clinical care at community locations to reduce access issues such as the ability to get into a dental office and the anxiety of a dental office environment.

Health outcomes:

- Improved dental care access.
- Improved oral health utilization.

Sustainability: If successful, Capitol Dental Care will continue the program by showing reduced costs to the healthcare system and improved partnerships.

Wellness in Neighborhood Stores

Date range: January 2020 to December 2021

Location: Linn County

Champions: Linn County Public Health/Oregon State University



HL



SDH

Linn County Public Health (LCPH) and OSU Center for Health Innovation (OSU) are partnering with convenience store owners and managers on environmental and health impact assessments. Convenience stores will be assessed and adjusted to improve healthy eating and food security in areas IHN-CCO members live.

Health Outcomes:

- Increase the percentage of IHN-CCO members who have access to healthy food.
- Improved understanding of IHN-CCO members' health needs with regard to shopping in convenience stores.

Sustainability: If successful, Linn County Public Health and Oregon State University will develop a toolkit for dissemination throughout the region.