



IHN-CCO Transformation
**Summary of Current Pilots
for Lincoln County**

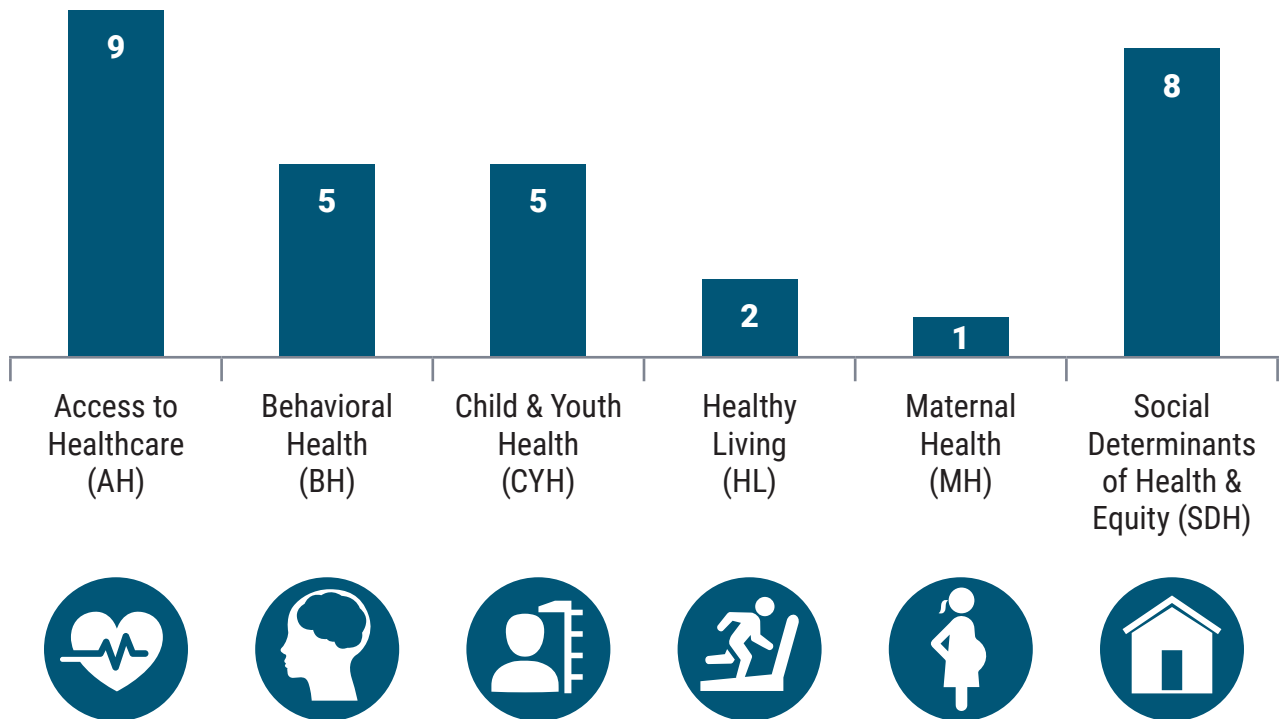
Winter 2021

Be Healthy. Be Happy.

These are the current InterCommunity Health Network Coordinated Care Organization (IHN-CCO) Transformation pilots in Lincoln County. Pilots are selected from a competitive Request for Proposals process. The goal is to achieve better quality healthcare, lower costs and more access to services.

To be considered, pilots must meet at least one Community Health Improvement (CHIP) area. The new pilots in 2021 must address at least one CHIP Outcome and Indicator Concept in the area of Access, Behavioral Health or Social Determinants of Health and Equity. The graph below shows the CHIP areas addressed by each pilot and the icons are carried through the document to represent CHIP areas for each pilot summary.

Transformation Pilots by CHIP Area and by County



Bravery Center

Date range: January 2020 to June 2021

Location: Lincoln County

Site: Olalla Center



The Bravery Center pilot primary goal is to create an open, accepting center where LGBTQIA2S+ youth can access mental health, educational, vocational, mentorship, and other services such as meals. The Bravery Center pilot will also offer assistance with LGBTQIA2S+ specific needs, such as assisting youth by connecting with LGBTQIA2S+ affirming healthcare providers, navigating the legal processes for name and/or gender changes, and accessing specialist services.

Health Outcomes:

- Provide behavioral health services from affirming providers to LGBTQIA2S+ youth.
- Reduced food insecurity within the LGBTQIA2S+ population.
- Reduced homelessness within the LGBTQIA2S+ population.

Sustainability: If successful, Olalla will continue support of the Bravery Center pilot with partnerships in the region.

CommCard Program

Date range: January 2021 to December 2021

Location: Benton, Lincoln and Linn counties

Site: The Arc of Benton County



The CommCard Program pilot is a communication and accommodation program for people with developmental disabilities (DD) and the healthcare professionals who serve them. The pilot will be brought to Benton, Lincoln and Linn County middle and high schools to enhance self-advocacy skills among students who experience any degree of communication impairment. The CommCard Program involves a customizable card with important communication accommodation information as well as training for both the cardholders and healthcare professionals who will be viewing their patients' cards.

Health Outcomes:

- Addresses health inequities among people with DD.
- Increased access to healthcare professionals for young people with disabilities.
- Improved satisfaction for healthcare professionals.

Sustainability: If successful, The Arc of Benton County will continue to support the CommCard Program in all three counties.

Community Doula Program

Date range: January 2021 to December 2021

Location: Benton, Lincoln and Linn counties

Site: Heart of the Valley Birth and Beyond



Birth doulas are Traditional Health Workers that build trusting relationships with pregnant members and provide physical, emotional and informational support during labor and birth. The main goal of the pilot is to expand the original Community Doula pilot into Lebanon, Newport and Lincoln City hospitals.

Health Outcomes:

- Increase number of Spanish speaking doulas in the community, especially to the East Linn and coastal communities.
- Improve birth outcomes such as prematurity, cesarean-section and pain medication use.
- Cross train active multi-lingual doulas to serve as health care interpreters.

Sustainability: If successful, Heart of the Valley Birth and Beyond will continue spreading services into new communities.

Culture of Supports

Date range: January 2021 to December 2021

Location: Lincoln County

Site: North End Senior Solutions



This pilot creates a process of screening for behavioral and memory health with follow-up supports that will result in improved relations between IHN-CCO members and their Health Care Providers. By providing education, peer and mentor supports, adaptive tools, and by addressing social determinants of health, the burden of healing and well-being shifts from health care providers to the individual members. The desired outcome will be an engaged “partnership in health” resulting from a culture of supports within the community.

Health outcomes:

- Improved member satisfaction with Healthcare Providers (HCP).
- Provide Community Screening and Supportive Programs for behavioral and memory health.
- Contribute to HCPs awareness, knowledge and skills for communication with behaviors.
- Provide more transportation options for members.
- Eliminate or compensate for disparities that increase health risk.

Sustainability: If successful, North End Senior Solutions will work to contract with IHN-CCO for traditional health worker services and continue education and training.

Disability Equity Center

Date range: January 2021 to December 2021

Location: Benton, Lincoln and Linn counties

Site: Disability Equity Center



AH



BH



HL



SDH

The primary goal of the Disability Equity Center pilot is to create an inclusive cultural and resource center that meets the diverse needs of people living with disabilities across the Willamette Valley, as well as their family and friends. The pilot will address the specific needs of healthcare providers, addressing gaps and augmenting partnerships across formal disability support services as well as educating healthcare workers and support providers about client-driven disability healthcare best practices. We will also teach our local community about ableism and change social misperceptions about people with disabilities.

Health outcomes:

- Increase opportunities for disabled people to be as healthy as possible, in particular through decreased social isolation and increased agential interdependence.
- Increase number of disabled people who receive care communicated in a way that ensures that they can understand and be understood by their care providers, and that they are effectively engaged in their care.
- Reduce stigma and increase community awareness that disabilities are part of everyday life and widely experienced.

Sustainability: If successful, DEC will work with IHN-CCO to contract for services and also partner around increased opportunities for collaborative, non-traditional healthcare delivery models.

Hepatitis C Virus Outreach Screening & Treatment

Date range: January 2021 to December 2021

Location: Lincoln County

Site: Lincoln County Community Health Center, Lincoln County Public Health, the Confederated Tribes of Siletz Indians' Community Health Clinic, Samaritan Health System Infectious Disease



Lincoln County Community Health Center, Lincoln County Public Health, the Confederated Tribes of Siletz Indians' Community Health Clinic and Samaritan Health System Infectious Disease are partnering to implement a Hepatitis C Virus (HCV) treatment protocol for primary care providers in community health clinics. This project will be utilizing an innovative approach of combining Harm Reduction outreach testing and navigational peer support with accessible treatment in primary care medical homes.

Health outcomes:

- Increased access to HCV screening and treatment for populations most at risk for HCV infections.
- Increased the number of at-risk individuals in treatment for HCV infections.

Sustainability: If successful, Hepatitis C Virus Outreach Screening & Treatment will continue partnerships and billing for services.

Integrated Foster Child Wellbeing

Date range: January 2019 to December 2021

Location: Benton, Lincoln and Linn counties

Champion: Dr. Carissa Cousins,
Samaritan Health Services



The purpose of this pilot is to develop a model of care to find the best way to coordinate care for high-need foster children. Key activities are coordination of services, intensive care coordination, creating partnerships and establishing a sustainable model.

Health Outcomes:

- Provide timely medical, dental, and mental health care for all foster children.
- Support foster youth and families during transition periods.

Sustainability: If successful, the partnerships will continue, and funding will occur through medical billing and reduced costs.

Navigation to Permanent Supportive Housing

Date range: January 2020 to December 2021

Location: Lincoln County

Site: Lincoln County Sheriff's Office



Lincoln County Sheriff's Office and many other Lincoln County partners are developing a model of Permanent Supportive Housing targeting gap areas of homelessness. This model would add to existing projects in housing with a referral system hub supported by partners involved.

Health Outcomes:

- Identify and network development of community partners for wrap around services.
- Improved care coordination of housing/social services with the Patient-Centered Primary Care Home (PCPCH).
- Increase permanent housing availability.

Sustainability: If successful, Lincoln County Sheriff's Office will continue to will work with IHN-CCO and other partners.

Wellness to Smiles

Date range: January 2020 to December 2021

Location: Lincoln County

Site: Advantage Dental



The Wellness to Smiles pilot program addresses barriers to nutritious affordable food, housing, and oral health by improving the collaboration between oral health care and social services in Lincoln County. The primary goal of the pilot is to coordinate systems among community partners to reduce health disparities and improve oral health and overall health outcomes for IHN-CCO clients.

Health Outcomes:

- Increase oral health usage.
- Screenings for SDoH and referral system developed.
- Improved member satisfaction.

Sustainability: If successful, Advantage Dental will continue to provide services.