



IHN-CCO Transformation
**Summary of Current Pilots
for Benton County**

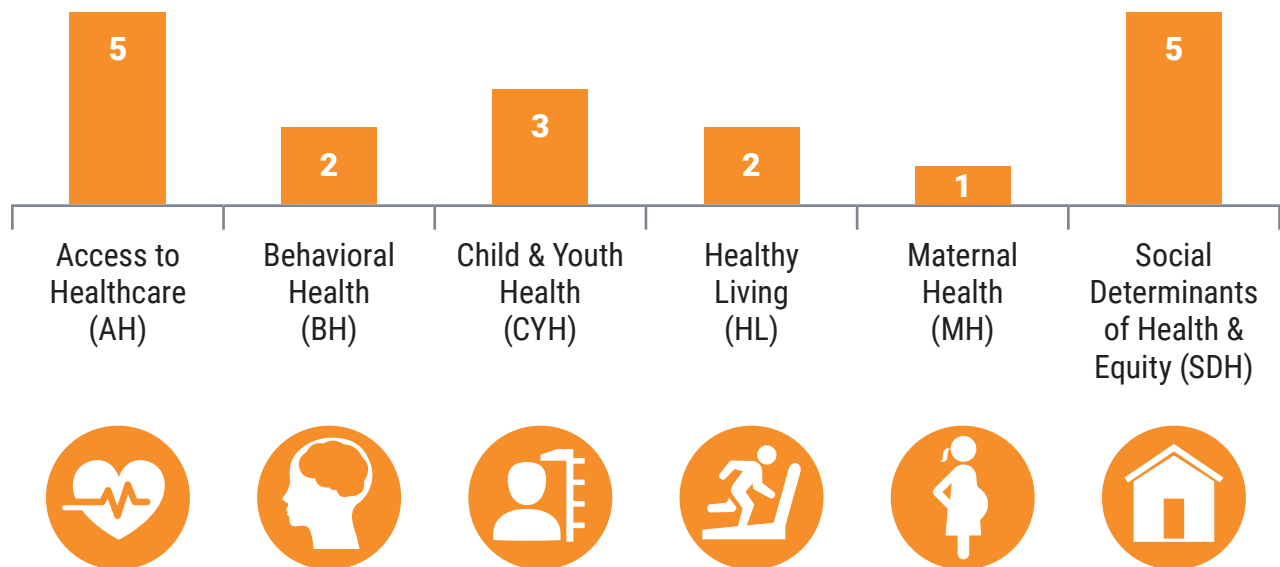
Winter 2021

Be Healthy. Be Happy.

These are the current InterCommunity Health Network Coordinated Care Organization (IHN-CCO) Transformation pilots in Benton County. Pilots are selected from a competitive Request for Proposals process. The goal is to achieve better quality healthcare, lower costs and more access to services.

To be considered, pilots must meet at least one Community Health Improvement (CHIP) area. The new pilots in 2021 must address at least one CHIP Outcome and Indicator Concept in the area of Access, Behavioral Health or Social Determinants of Health and Equity. The graph below shows the CHIP areas addressed by each pilot and the icons are carried through the document to represent CHIP areas for each pilot summary.

Transformation Pilots by CHIP Area and by County



CommCard Program

Date range: January 2021 to December 2021

Location: Benton, Lincoln and Linn counties

Site: The Arc of Benton County



The CommCard Program pilot is a communication and accommodation program for people with developmental disabilities (DD) and the healthcare professionals who serve them. The pilot will be brought to Benton, Lincoln and Linn County middle and high schools to enhance self-advocacy skills among students who experience any degree of communication impairment. The CommCard Program involves a customizable card with important communication accommodation information as well as training for both the cardholders and healthcare professionals who will be viewing their patients' cards.

Health Outcomes:

- Addresses health inequities among people with DD.
- Increased access to healthcare professionals for young people with disabilities.
- Improved satisfaction for healthcare professionals.

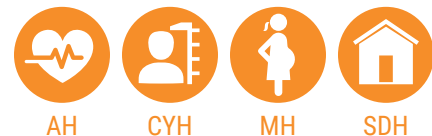
Sustainability: If successful, The Arc of Benton County will continue to support the CommCard Program in all three counties.

Community Doula Program

Date range: January 2021 to December 2021

Location: Benton, Lincoln and Linn counties

Site: Heart of the Valley Birth and Beyond



Birth doulas are Traditional Health Workers that build trusting relationships with pregnant members and provide physical, emotional and informational support during labor and birth. The main goal of the pilot is to expand the original Community Doula pilot into Lebanon, Newport and Lincoln City hospitals.

Health Outcomes:

- Increase number of Spanish speaking doulas in the community, especially to the East Linn and coastal communities.
- Improve birth outcomes such as prematurity, cesarean-section and pain medication use.
- Cross train active multi-lingual doulas to serve as health care interpreters.

Sustainability: If successful, Heart of the Valley Birth and Beyond will continue spreading services into new communities.

Disability Equity Center

Date range: January 2021 to December 2021

Location: Benton, Lincoln and Linn counties

Site: Disability Equity Center



The primary goal of the Disability Equity Center pilot is to create an inclusive cultural and resource center that meets the diverse needs of people living with disabilities across the Willamette Valley, as well as their family and friends. The pilot will address the specific needs of healthcare providers, addressing gaps and augmenting partnerships across formal disability support services as well as educating healthcare workers and support providers about client-driven disability healthcare best practices. We will also teach our local community about ableism and change social misperceptions about people with disabilities.

Health outcomes:

- Increase opportunities for disabled people to be as healthy as possible, in particular through decreased social isolation and increased agential interdependence.
- Increase number of disabled people who receive care communicated in a way that ensures that they can understand and be understood by their care providers, and that they are effectively engaged in their care.
- Reduce stigma and increase community awareness that disabilities are part of everyday life and widely experienced.

Sustainability: If successful, DEC will work with IHN-CCO to contract for services and also partner around increased opportunities for collaborative, non-traditional healthcare delivery models.

Integrated Foster Child Wellbeing

Date range: January 2019 to December 2021

Location: Benton, Lincoln and Linn counties

Champion: Dr. Carissa Cousins,
Samaritan Health Services



The purpose of this pilot is to develop a model of care to find the best way to coordinate care for high-need foster children. Key activities are coordination of services, intensive care coordination, creating partnerships and establishing a sustainable model.

Health Outcomes:

- Provide timely medical, dental, and mental health care for all foster children.
- Support foster youth and families during transition periods.

Sustainability: If successful, the partnerships will continue, and funding will occur through medical billing and reduced costs.

Skills and Connections to Support Housing

Date range: January 2020 to December 2021

Location: Benton County

Site: Corvallis Housing First



The Skills and Connections to Support Housing pilot is implementing a program to increase the skills, knowledge, and confidence of residents. The skills and connections to resources will help with employment, education, and more. The end result will be greater stability for residents and less spending on expensive services.

Health Outcomes:

- Increased permanent supportive housing.
- Improved housing stability rates.
- Closed loop referral system and service coordination for residents developed.

Sustainability: If successful, Corvallis Housing First will work with IHN-CCO to contract for services.